



# 6003 VEHICULAR SWING GATE ACTUATOR



deluxe

standard

control boxes



## reliability

in a compact and simple to install design



## smooth operation

no slamming when gate closes



## fully enclosed

screw drive for added safety



## built in

reset and test buttons

- Mounts directly on gate and gate-post – simplifying installation and eliminating the need for concrete pads
- The powerful screw drive connects directly to the gate eliminating weak mechanical connections
- Actuators are designed for gates up to 10-feet wide and are ideal for residential applications
- Built in limit switches precisely control the start/stop speed, and travel of the gate
- Fully enclosed screw
- 115 VAC input power. Actuator operates on 24 VDC power with built-in battery backup
- Plug-in loop detectors simplify wiring and make installation easy
- Bi-parting gate system controlled from single board

FEATURES

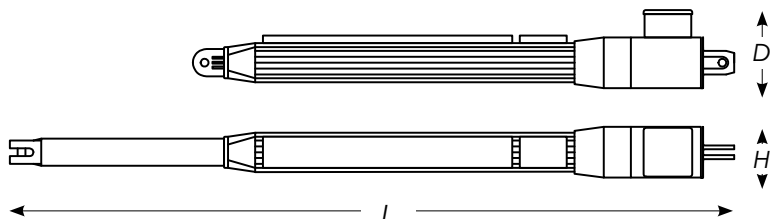
ACCESS CONTROL SOLUTIONS





# 6003 VEHICULAR SWING GATE ACTUATOR

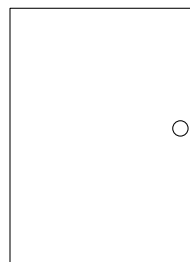
The Model 6003 swing gate actuator offers convenience and reliability in a compact design. It mounts directly on your gate and pilaster, simplifying installation and eliminating the need for concrete pads. The powerful screw driven piston connects directly to the gate eliminating weak mechanical connections and it is fully enclosed to prevent dirt and other airborne corrosives from contaminating the screw threads. And there is no need to worry about hydraulic leaks, check valves or pumps.



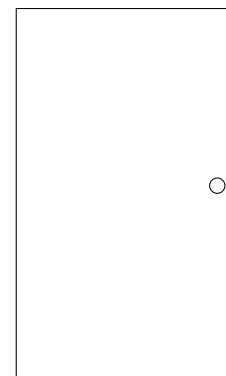
## 6003 Actuator

46.5" L(extended) x 3.25" H x 5" D

1181mm W x 82.5mm H x 127mm D



**Standard Control Box**  
12.5" W x 16.5" H x 4.25" D  
(318mm W x 419mm H x 108mm D)



**Deluxe Control Box**  
14.5" W x 24" H x 4.25" D  
(368mm W x 610mm H x 108mm D)

### Control Boxes

The microprocessor based electronic control board provides many advanced features typically not found in an operator in this class. Two control boxes are available to meet specific needs. The standard control box is typically used for applications not requiring power for

additional control devices, such as telephone entry systems or access control products. The deluxe control box provides three 115 VAC convenience outlets to power auxiliary power transformers. Both control boxes include batteries to power the actuator during power outages.

## 6003 Specs

Class of operation	Max Gate Length *	Max Gate Weight *	Control Panel	Power	Back-up
I	10 Ft 3.05 m	300 Lbs. 136 kg	115 VAC, 60 Hz	Actuator 24 VDC from the control panel	batteries provided

\*Assumes gate and hardware to be in good condition and swinging in a level plane

## General Specs

### Mechanical

Speed: 90° in approximately 15 seconds

Case: extruded aluminum

Useable rod stroke: 15"

### Manual Release

Keyed release provided

Fail-secure mechanical

### Safety

External obstruction sensing devices must be used with this operator

### Advanced Features

Fully enclosed drive mechanism

Adjustable built in limit switches precisely control the start / stop speed, and travel of gate for smooth operation

115 VAC input power  
24 VDC operating power

Batteries included

Built-in battery charger

Ports for Exit and Reverse plug-in loop detectors

90° in approximately 12 seconds

Gate overlap feature for dual gate operation

Magnetic lock power circuit

Built-in reset and test buttons

Maximum run timer

Built-in high current warning

### Operating Temp

32°F to 145°F

0°C to 62°C

### Safety Standards

Complies with the UL 325 and UL 991 safety standards

### Shipping Weight

Approximately 20-25 lbs (9-11.3 kg)

### Warranty

2-year limited factory warranty

Distributed by:

### DOORKING®, INC.

120 Glasgow Avenue, Inglewood, California 90301 U.S.A. Tel: 310-645-0023 FAX: 310-641-1586 www.doorking.com

© 2011 All Rights Reserved. Product specifications may change without notice. Rev. 2/11

### MEMBER:

